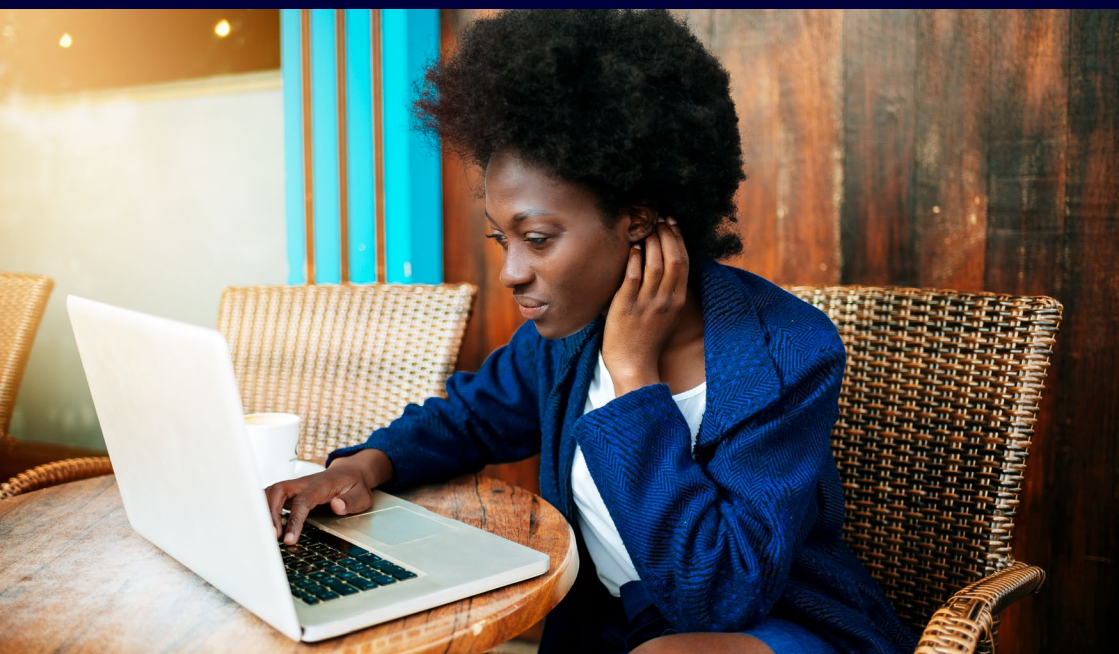


This is how the radiator meter works

Information for residents

ista
Switch to Smart



The radiator meter has two temperature sensors



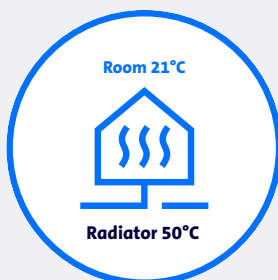
Sensor 1 measures the temperature of the room where the radiator is located

Sensor 2 measures the temperature of the radiator

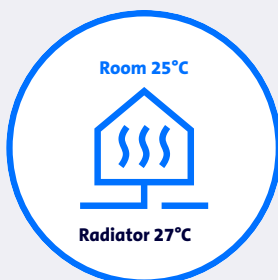
When does the radiator meter start counting?

The radiator meter only counts when the radiator emits heat. This is the case if the radiator temperature is at least 23°C and the room temperature at least 4.5°C degrees lower. The radiator meter counts in units.

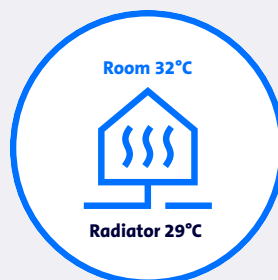
In the three examples below, we'll explain when the meter does or doesn't count.



The meter counts because the difference is more than 4.5°C.



The meter doesn't count because the difference is less than 4.5°C.



The meter doesn't count because the temperature of the room is higher than that of the radiator.

Your meter readings are converted into heat consumption

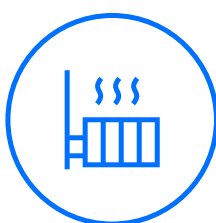
Not all radiators in your home are the same size and therefore they don't emit the same amount of heat. That is why the meter readings are converted using a conversion factor. The conversion factor is determined by the capacity of the radiator. You can find this information on your statement.

The counting of the radiator meter depends on:

- The temperature of the radiator
- The temperature of the room where the radiator is located
- How long the radiator has been on
- How well the radiator works
- How well the radiator knob works

The central heating system and radiators must also be balanced properly.

Important information at a glance



- The meters only start counting when the radiator temperature is at least 23°C.
- The radiator temperature must be at least 4.5°C higher than the room temperature.
- The meters comply with European standard NEN-EN 834.
- If your meter is broken or something has changed on your radiator, please notify ista.

Also check out our [saving tips](#) to help you save energy.

ista Nederland B.V.
P.O. Box 179 | 3100 AD Schiedam
+31 10 245 57 00
info@ista.nl | ista.nl

ista
Switch to Smart