

Bus Switcher – unlimited flexibility



The Bus Switcher allows reading of up to 2,000 terminal devices via a level converter as well as remote reading via a modem. Up to 250 terminal devices can be integrated in a conventional M bus system.

Installation in larger objects, e.g. commercial real estate, with more than 250 terminal devices generally requires several level converters or several modems for remote reading.

The bus switcher is a bus multiplexor; up to 250 terminal devices can be connected to each of the 8 channels. An application with less than 250 terminal devices is also feasible in the following cases:

- Expansion of existing facilities. This prevents the investment into an expensive, more powerful level converter.
- With interference-prone systems by spreading the individual M bus lines to several channels. This also improves the readout quality in general.

Technical data

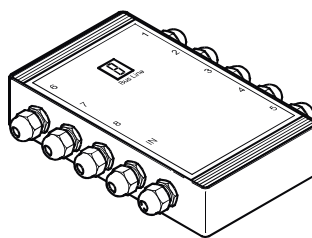
Device type	Bus switcher
Art. no.	19887
Interfaces	
M bus interface	acc. to IEC 870-5 for connection of 2,000 terminal devices
Bus lines	8 pcs., 250 terminal devices each
Line type	2-veined
Cross section	0.5 to 1.5 mm ²
Cable length per line	max. 4,000 m (total length)
Data transmission	300/2.400 Baud
Operating data	
Operating voltage	230 V/AC
Net frequency	50 Hz
Power consumption	approx. 1 W
Max. switching current	10 A
Ambient temperature (storage)	- 30 to +70 °C
Ambient temperature (operation)	- 15 to + 55 °C
Air humidity	5 to 95 %, non-condensing
Protection class	IP 54
Casing	
Material	Plastic ABS, RAL 7035
7-segment display on the front	shows the respective line
Screwed cable glands	10 pcs. PG9
Dimensions in mm	approx. 160 x 240 x 60 (H x W x D)

Notice! Operation only in connection with Level Converter LC 250

BusSwitcher

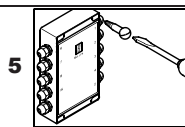
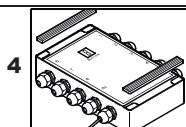
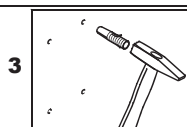
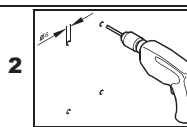
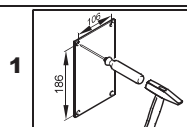
ista

D	Montageanleitung	N	Monteringsanvisning
GB	Installation Instructions	PL	Instrukcja montażu
F	Notice de montage	RUS	Руководство по монтажу
I	Istruzioni di montaggio	E	Instrucción de montaje
DK	Montagevejledning	CZ	Montážní návod
NL	Montage-instructies	H	Szerelési útmutató
SK	Návod na montáž	RO	Instrucțiuni de montaj
HR	Uputa za montažu	P	Instruções de montagem



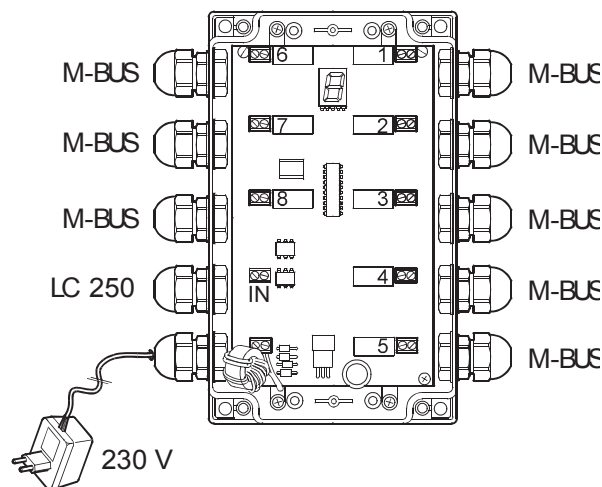
Emergency switching gear

The emergency switching gear (bridging the electronics) of the BusSwitcher is only allowed in voltage free condition. Connect the bridging cable onto the circuit board between the input for the Level Converter LC 250 (IN) and output of the required M-BUS line. Only one bus line can be switched through. Before tightening the housing lid again, you must remove the emergency switching gear again!



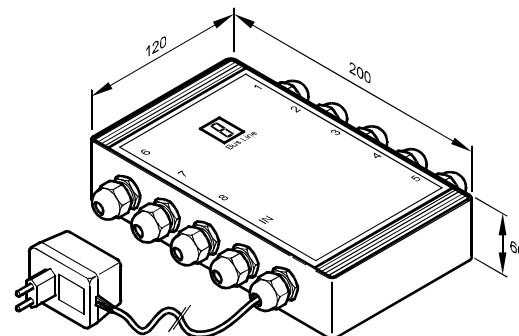
Connection

- All cables (Bus lines) may only be connected, if they are voltage free.
- The M-Bus Level Converter must stay switched off.
- Pull out the mains adapter of the Bus switcher as well.
- The individual cables of the Bus lines are screwed on the solderless lugs in the device housing. The polarity of the individual cable cores is not important.
- The Bus line of the Level Converter is connected to the terminal inscribed with "IN".



Technical data / Dimensions

- Power consumption approx. 1 Watt.
- Temperature range in operation: -15°C ... +55°C.
- Storage temperature: -30°C ... +70°C.
- Humidity: 5 ... 95% not condensing.
- Protection class: IP54.
- Housing: Material ABS, colour lightgrey (RAL 7035).
- Cable screwed connections for cable diameter from 4 to 10 mm, material polyamide (PA).
- Operation only allowed in connection with the Level Converter LC 250.



i	D	Weitere Informationen erhalten Sie bei Ihrer ista-Niederlassung oder auf der ista-Homepage.	N	Ytterligere informasjon får du hos din ista-filial eller på ista-Homepage.
	GB	Please consult your ista agent or the ista homepage for further information.	PL	Dalszych informacji udziela filia firmy ista albo na ista-Homepage.
	F	Vous obtiendrez d'autres informations auprès de votre agence ista ou sur le site web d'ista.	RUS	Дальнейшую информацию Вы можете получить в Вашем филиале ista или на сайте ista.
	I	Per ulteriori informazioni, contattare la propria filiale ista o consultare il sito Internet ista.	E	Más informaciones las recibirán en la sucursal o en la página principal de ista.
	DK	Yderligere informationer kan De få hos Deres ista-filial eller finde på istas hjemmeside.	CZ	Další informace získáte ve Vaší pobočce ista nebo na homepage ista.
	NL	Meer informatie verkrijgt u bij uw ista-vestiging of op de ista-homepage.	H	További információkért kérjük forduljon az ista kirendeltségéhez vagy látogassa meg az ista honlapját.
	SK	Ialšie informácie vo Vašej pobočke ista alebo na domovskej stránke ista.	RO	Pentru informații suplimentare contactați reprezentanța dvs. ista sau vizitați site-ul web ista.
	HR	Daljnje informacije možete dobiti u Vašoj podružnici ista-e ili na početnoj web stranici ista-e	P	Poderá obter mais informações junto da sua filial ista ou na página principal da firma.
http://www.ista.com				