

Insight into your heat consumption

Research has shown that insight into your heat consumption will lead to more conscious heat use behaviour and higher energy savings. Therefore, the heat law requires you to be given insight into your heat consumption several times a year. This allows you to monitor your consumption and adjust your use if you wish.

How does it work?

Your radiographic heat meters are specifically designed to provide you with insight into your heat consumption. The monitoring tool in our ista webportal and the ista app allow you to review your current heat consumption every week. They will show you the total consumption in your home as well as the individual consumption of each radiator. They also allow you to compare your consumption with your average consumption in previous years, or the average consumption in your building. All of the data is displayed via clear graphs. Easy and organised!



Saving heat is great news for your wallet and the environment

Saving tips:

- Do not heat rooms you are not using. However, make sure to prevent freezing and intense cooling down by heating such rooms just slightly during cold weather.
- Heat evenly and close the doors to cooler spaces such as the hallway and the stairwell.
- Close your curtains, but do not let them drape in front of your radiators. If you do, the heat will be trapped behind the curtains, instead of circulating throughout the room.
- Freestanding radiators are the best heat source; built-in radiators or hanging laundry on your radiators will limit heat radiation.
- Frequently air out your home. The air in a properly aired-out home tends to be relatively dry. Dry air heats up faster than humid air, so this will allow you to save on your energy costs as well



For more information visit our website www.ista.nl

We hope you enjoy a comfortable living environment.

If you wish to use the ista webportal and the ista app in your building, ask your property manager.

ista

Save energy by metering

heat meters



ista Nederland B.V.

PO box 179 • 3100 AD Schiedam

☎ 010-245 57 00

✉ info@ista.nl

🌐 www.ista.nl

Save on your energy costs

Did you know that you can positively influence your energy costs? You can save an average of 20% to 25% on your heat costs if you are provided with more insight into your consumption. This is not only great news for your wallet, but also for the environment! This brochure explains how it works. We will also give you some useful tips on how to use your valuable heat as efficiently as possible.

Collective central heating installation and metering

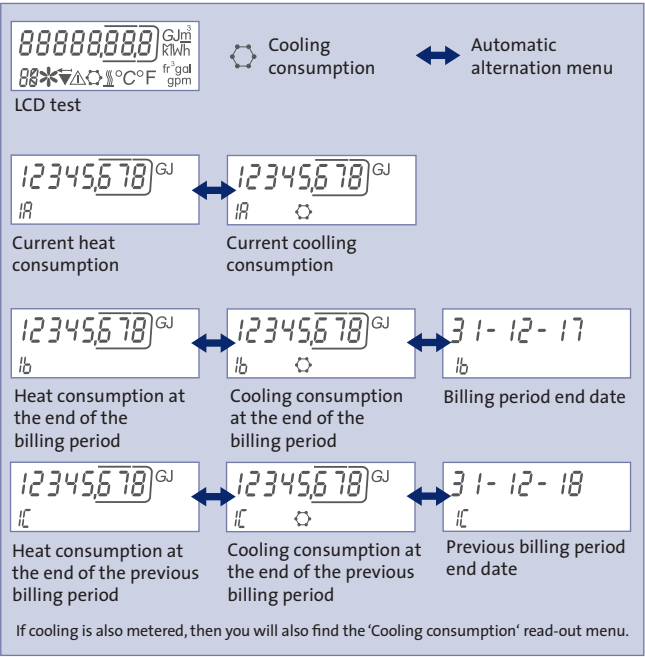
The heating system in your home is connected to a collective central heating system. A heat meter has been or will be installed to meter your personal heat use. This meter is a **sonsonic®** or **ultego®** type meter. Which type is placed in your home will be indicated on the meter. The meter will accurately record heat output from the radiator, floor heating or any other heat source, which means that you can be assured of an accurate bill.



Which meter do I have?

sonsonic® read-out menu

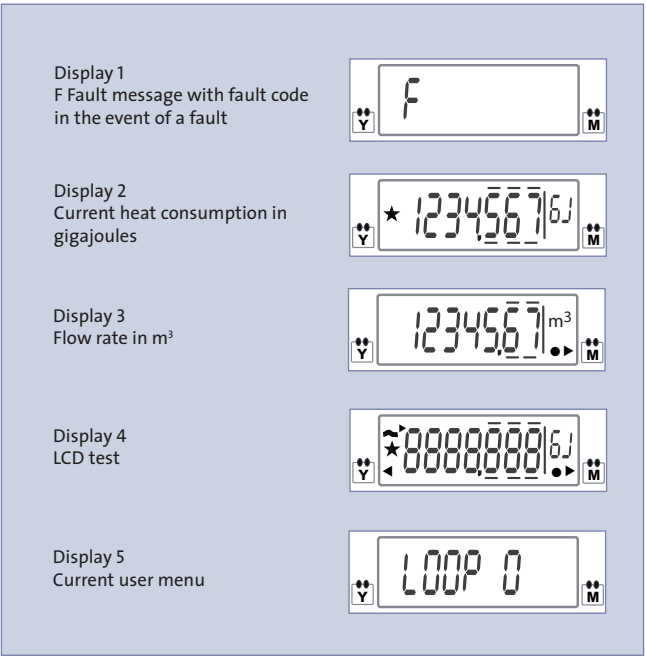
There is a touch button at the bottom of the front of the meter. Various data can be obtained and read from the display by touching this button. If you touch it repeatedly, the following data will be displayed.



When you stop touching the button, the display will go blank again after 1 minute.

ultego® read-out menu

There is a black button at the front of the meter. Pressing it briefly (less than 2 sec) repeatedly displays the following data.



When you stop touching the button, the display will go blank again after 1 minute.

The meter

The meter stores the reading at the end of the billing period, which has been agreed with your property manager. ista Nederland handles your meter readings. The meter is read remotely so there is no need to stay at home for the meter reader.

The **sonsonic®** and **ultego®** heat meters are continuous calculation meters, which means they continue recording on into the next billing period. To process your consumption, the final reading of the previous period is deducted from the final reading of the current billing period. Meter readings are stored in the meter's memory for 3 years.

